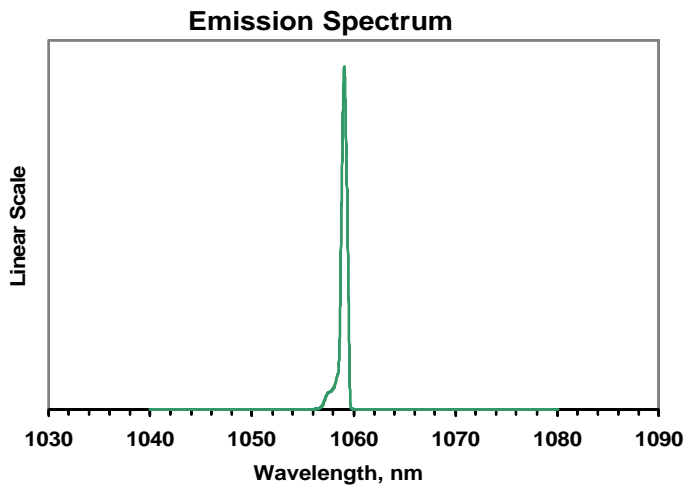
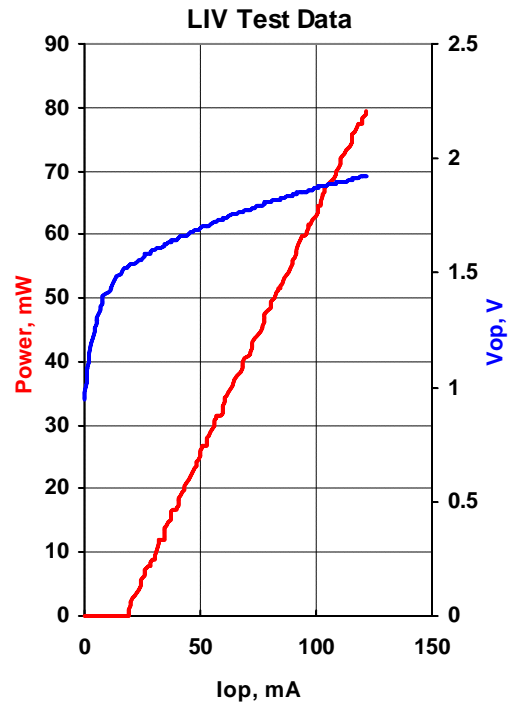




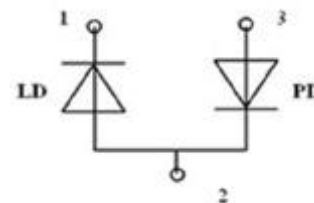
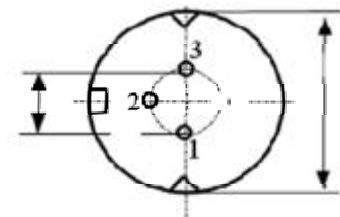
<b>MODEL</b>	QLD-1060-50S
<b>PART NUMBER</b>	Sample

Parameter	Value	Units
Case Temperature	25	°C
Optical Output Power	50	mW
Threshold Current	19	mA
Operating Current	81	mA
<b>Maximum Operating Current</b>	<b>89</b>	<b>mA</b>
Operating Voltage	1.81	V
Monitor Current	0.11	mA
Center Wavelength	1058.9	nm
Spectral Width	0.63	nm



**NOTE**  
This type of laser diodes must be used with temperature controlled mount.

Pin	Connection
1	LD Cathode
2	LD Anode, PD Cathode
3	PD Anode



<b>Operator</b>	
<b>Date</b>	

**BOTTOM VIEW**