



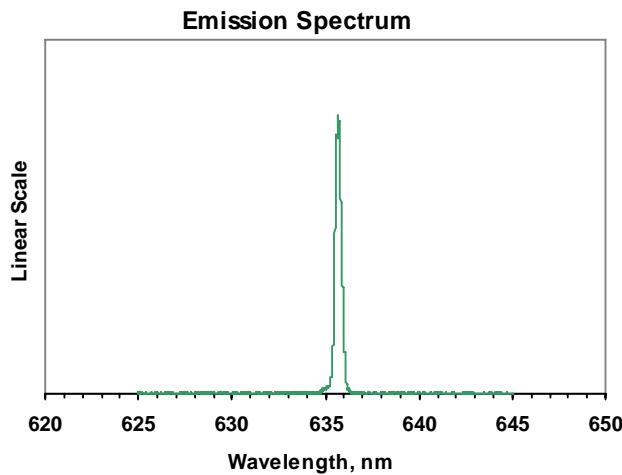
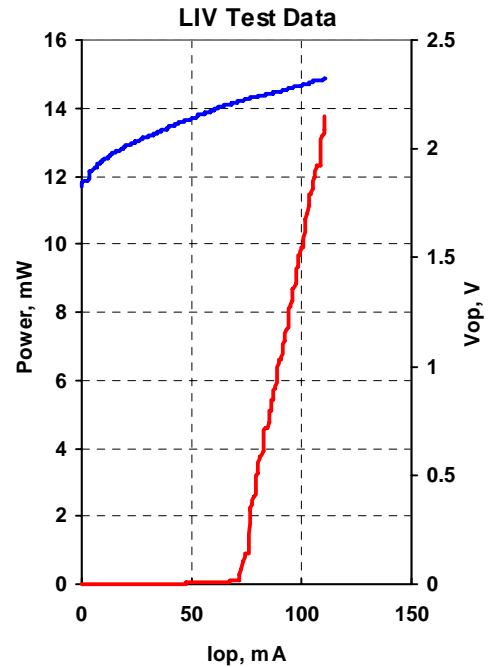
QPHOTONICS, LLC

3830 Packard Road,
Suite 280,
Ann Arbor, MI 48108,
USA

Phone: 734-477-0133
Fax: 734-477-0166
Email: info@qphotonics.com
http://www.qphotonics.com

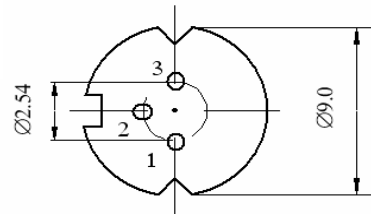
MODEL	QLD-635-10S
PART NUMBER	SAMPLE

Parameter	Value	Units
Case Temperature	25	°C
Optical Output Power	10	mW
Threshold Current	7	mA
Operating Current	100	mA
Operating Voltage	2.29	V
Monitor Current	0.58	mA
Monitor Dark Current	0	nA
Center Wavelength	636	nm
Spectral Width	0.27	nm

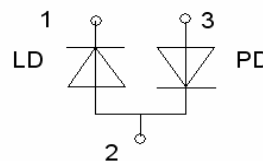


NOTE
This type of laser diodes must be used with temperature controlled mount.

Pin	Connection
1	LD Cathode
2	LD Anode, PD Cathode
3	PD Anode



Operator	WY
Date	5/15/2008



BOTTOM VIEW